

# HAND PALLET TRUCK SCALE

**MPT15S**



0,5%



3300lb



3 3/4 - 8 1/2 in



304  
Stainless  
Steel

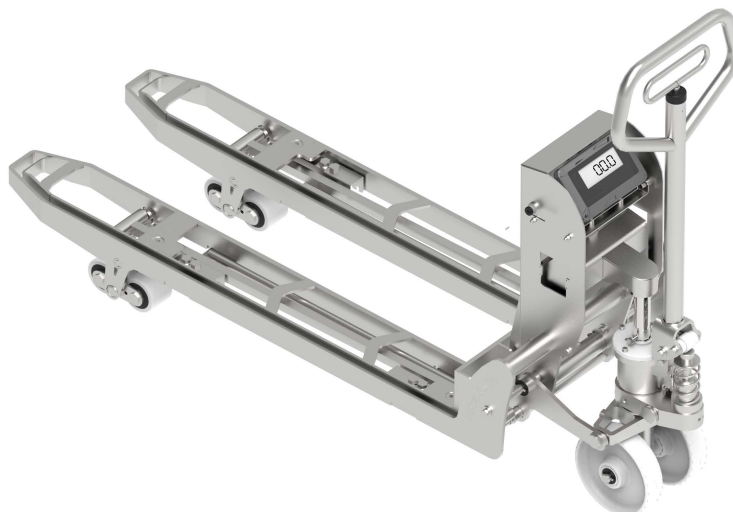
- **Hygienic innovative design**
- **Aggressive environments resistant chassis**
- **Robust and durable structure**
- **Easy to handle**
- **Maximum stability**
- **Quiet**



Watch video

The innovative and patented hygienic design of the new Inoxtruck Hand Pallet Truck Scale, ensures a lower microbiological contamination risk, guaranteeing strict hygiene compliance in the high demanding area of the food industry.

The MPTS Series of Hand pallet trucks with Integrated Weighing System, provide a precise measurement for checking weights at goods reception and shipping, thanks to the four weighing cell technology. The stainless steel load cells mounted on the push rods are protected by an outside frame against possible shocks, avoiding calibration errors.



## PERFORMANCE CHARACTERISTICS

- 3300lb. weighing capacity.
- Measuring range from 0 up to 3300 lb in 1100lb steps.
- High accuracy: Maximum 0,5% deviation from measuring range.
- CIP 68 protected Stainless Steel Cells.
- IP65 protected Display.
- Automatic zero adjustment.
- Plug-in battery module with 12V / 0,5Ah incl charger (maximum charge time is 12h)
- 60h operating time
- Automatic switch-off (programmable)
- RS232

## OPTIONS

- Printer
- Low Battery Warning
- Bluetooth
- EX-Proof Protection

Characteristics				
1.1	Manufacturer (Abbreviation)			Inoxtruck
1.2	Manufacturer's model designation			MPT15S
1.4	Operator type: manual, pedestrian, operator standing, seated			Manual Scale
1.5	Load capacity	Q	lb	3300
1.6	Load center distance	C	in	23 5/8
1.8	Load wheel axle fork face (forks lowered)	X	in	39 5/8
1.9	Wheelbase	Y	in	50 3/4
1.10	Chassis			AISI 304L
1.11	Sheet			AISI 304L
Weight				
2.1	Truck weight with nominal load		lb	2436
2.2	Axle loadings with nominal load		lb	912/2382
2.3	Axle loadings without load		lb	143/88
Wheels and Drive Train				
3.1	Tyres: PT=Polyurethane, PA=Polyamide (nylon), Vul=Vulkollan, drive/load side			PA/PA
3.2	Tyre dimensions, drive side		in	7 7/8 X 2
3.3	Tyre dimensions, load side		in	3 1/8 X 2 5/8
3.5	Number of wheels, drive/load side (x=driven)			2/2
3.6	Track width (center of tyres), drive side	b10	in	5 3/8
3.7	Track width (center of tyres), load side	b11	in	14 1/8
Dimensions				
4.4	Lift height	h3	in	4 3/4
4.9	Height of tiller arm (minimum/maximum)	h14	in	47 1/2
4.15	Fork height, fully lowered	h13	in	3 3/4
4.19	Overall length	l1	in	65 1/2
4.20	Length to fork face (includes fork thickness)	l2	in	17 1/2
4.22	Fork dimensions (thickness, width, length)	s/e/l	in	(2 3/8) / (6 1/4) / (48)
4.25	Outside width over forks	b5	in	26 3/4
4.32	Ground clearance at center of wheelbase (forks lowered)	m2	in	1 1/8
4.34b	Working aisle width (Ast) 39 3/8 x 47 in pallets, load crosswise	Ast	in	86 1/4
4.35	Turning circle radius	Wa	in	57 1/8

ULMA Inoxtruck's products are constantly improving. Because of this, some materials, options and specifications can be changed without previous notification.

#### OPTIONS:

- Vulkollan wheels
- Stainless steel AISI 316L
- Different length and width at forks available
- Tandem load Wheel
- Special 11 3/4 lift height
- Entry Exit Roller
- Splash proof protection

