

# ONE-WHEEL DRIVE STACKER

## EPS10MRM



1 ton



3,2 m



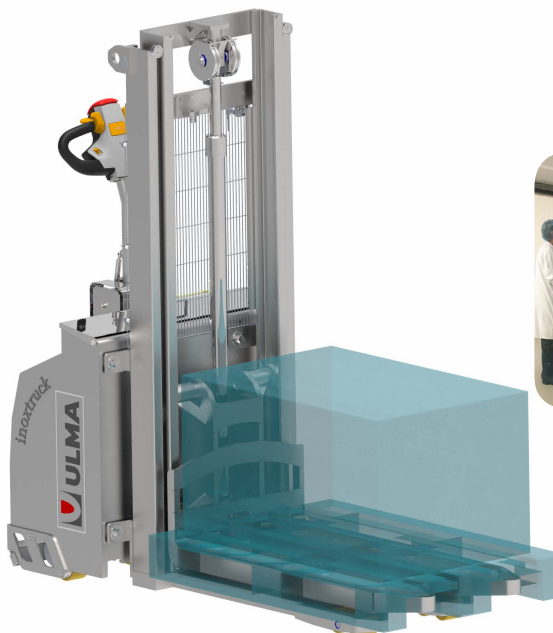
304  
Stainless  
Steel

- **Hygienic innovative design**
- **Resistant chassis**
- **One-Wheel Drive**
- **100% stainless steel with protected electronics**
- **AC motor**
- **IP65 Protected electronics**

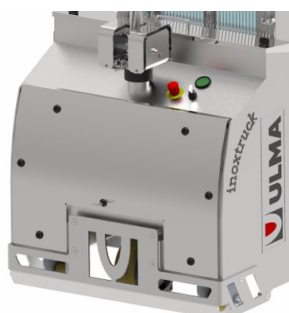
The ULMA Inoxtruck pedestrian electronic stacker provides a hygienic and innovative design, solving all stacking and load storage needs at different heights.

Our robust and 100% stainless steel electronic stacker ensures a high durability and the best robust and hygienic features, reducing the maintenance cost.

In conclusion, these equipment offer a residual load capacity at maximum height in stainless steel. ULMA INOXTRUCK has adapted the concept of hygienic design to its products, well known as part of the extended Good Manufacturing Practices (GMP) in the design of the processing and packaging machines. Therefore ULMA INOXTRUCK material handling equipments present an innovative and hygienic design that allow our customers to include our products in the cleaning procedures that the companies have set to guarantee the hygiene of their Clean Rooms.

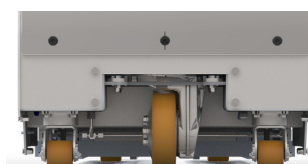


Watch video



### Hygienic innovative

Design Totally opened chassis, waterproof compartment for lifting/driving system and the operator drives and controls with high IP65 or higher protections provide a hygienic design. All electronic protection in a waterproof and heated compartment. Curved and sloped structure for a perfect drainage and a fast drying.



### Ergonomic and Safety

This stacker has a comfortable mechanical steering and speed reduction function in curves apart from a weight limiter function. Furthermore, this stacker has a safety valve to prevent carriages and electronic components breaks.

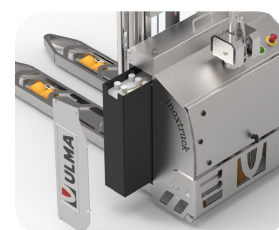


### High Visibility

The revolutionary and hygienic vision mast offers an optimum front visibility and lift capacity.

### Easy Accessibility

Quick open hood to access to all electronic parts. Side battery output.



### Minimum Maintenance

Waterproof seated stainless steel bearing in load wheels and mast. The bearing doesn't need any lubrication because its composition stainless steel and polymer plastic.



Inoxtruck

Characteristics				
1.1	Manufacturer (adbreivation)			ULMA Inoxtruck
1.2	Manufacturer's model designation			EPS 10 MRM
1.3	Power source: battery, diesel, LP gas, petrol			Battery
1.4	Operator type: pedestrian, operator standing, seated			Operator Standing
1.5	Load capacity	Q	kg	1000
1.6	Load center distance	C	mm	600
1.8	Load wheel axle to fork face	X	mm	800
1.9	Wheelbase	Y	m	1345
1.10	Chassis			AISI 304L
1.11	Sheet			AISI 304L
Weight				
2.1	Truck weight with nominal load & maximum battery weight		kg	2050
2.2	Axle loading nominal load & maximum battery weight, drive/load side		kg	858/1192
2.3	Axle loading without load & maximum battery weight, drive/load side		kg	743/307
Wheels and Drive Train				
3.1	Tyres: P=Polyurethane, PT=Power Thane, Vul=Vulkollan, drive/load side			Vul / Vul
3.2	Tyre dimensions, drive side			230 X 70
3.3	Tyre dimensiona, load side			85 X 73
3.5	Number of wheels, drive/load side (x=driven)			2+1x/4
3.6	Track widht (center of tyres), drive side	b10	mm	610
Dimensions				
4.9	Height of tiller arm (minimum/maximum)	h14	mm	960/1460
4.15	Fork height, fully lowered	h13	mm	90
4.19	Overall length	l1	mm	1910
4.20	Lenght to fork face (includes fork thickness)	l2	mm	710
4.21	Overall width	b1	mm	850
4.22	Fork dimensions (thickness, width, lenght)	s/e/l	mm	70/195/1200
4.25	Outside width over forks (minimum/maximum)	b5	mm	570
4.32	Ground clearance at center of wheelbase (forks lowered)	m2	mm	20
4.33a	Working aisle width (Ast) with 1000x1200 mm pallets,load lengthwise, platform up/down	Ast		2420
4.34a	Working aisle width (Ast) with 800x1200 mm pallets, load lenghtwise, platform up/down	Ast	mm	2350
4.35	Turning cicle radius	Wa	mm	1580
Performance				
5.1	Travel speed, with/without load		km/h	6/6
5.2	Lifting speed with/without load		m/s	0.11/0.15
5.3	Lowering speed with/without load		m/s	0.14/0.14
5.8	Maximum gradeability, with/without load		%	9.1/15
Electric Motor				
6.1	Drive motorcapacity (60 min. short duty)		kW	1.2
6.2	Lift motor output at 15% duty factor		kW	3
6.4	Battery voltage/capacity C5		V/Ah	24 / 250
6.5	Battery weight		kg	217
Miscellaneous				
8.1	Type of driven control			Proportional
8.2	Type of load handling control			Proportional

ULMA Inoxtruck products are constantly improving.because of this reason, somematerials, options and specificationscanbe changed without previous notifications.

EPS 10MRM					
Mast Type	h3 + h13	h1	h4	h2 + h13	b1
	mm	mm	mm	mm	mm
<b>Simplex</b>	1500	2040	2040	1500	850
<b>Duplex free lifting</b>	2600	1905	3155	1300	850
<b>Duplex</b>	2600	1905	3155	160	850
<b>Duplex free lifting</b>	3200	2305	3955	1600	850
<b>Duplex</b>	3200	2305	3955	160	850

## OPTIONS:

- Platform
- Stainless Steel AISI 316L
- Electronic steering
- Safety side bars
- Overhead guard
- Drive suspension
- Initial lift

