

# ELECTROMANUAL STRADDLE LEGS

## TIPPER **EBT 10S**



1000 kg



1300-1500mm



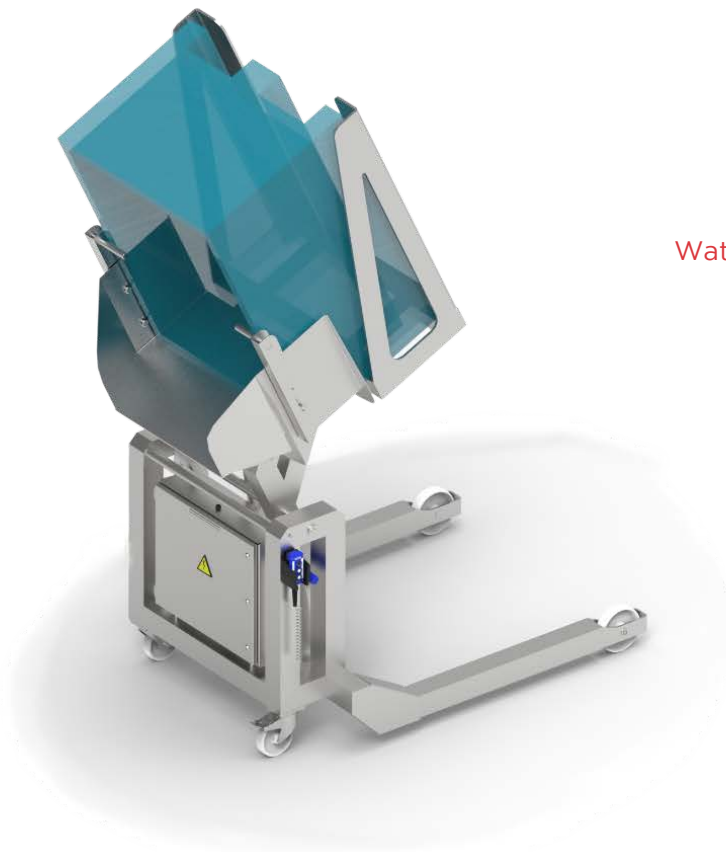
<115°



304  
Stainless  
Steel

- Hygienic innovative design
- Ergonomic and safe
- Robust and durable structure
- High productivity
- IP65 Protected electronics

ULMA Inoxtruck straddle legs tipper allows tipping bins 115°. This equipment has an hygienic and ergonomic design that make possible daily cleaning, avoiding the microbiological contamination risk and ergonomic load handling/tilting to conveyor belt or other containers, reducing the effort.



Watch video



### Hygienic and Innovative Design

The forks and chassis open the watertight compartment for the lifting system which protects all electronic equipment and controls with high elevation and IP protection, high cleanable design characterize the best, in which the folds and recesses disappear, and together with continuous welds allow comprehensive cleaning equipment without affecting its operation.



### Ergonomics and Efficiency

The independent tipping frame and the remote control will allow dropping bins with a forklift or pallet jack and tip them in a very fast and safe operation. A safety valve will prevent the load falling if an accidental hydraulic fail occurred.



### 100% Stainless

Made entirely of stainless steel, including hydraulic equipment.

### Minimum maintenance

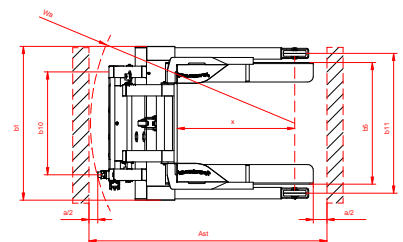
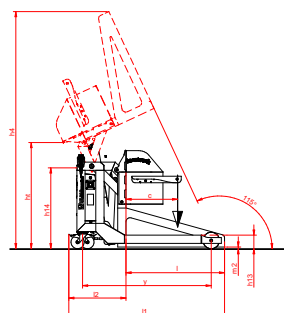
All bearings are sealed and lubricated origin. All joints are provided with bearings without lubrication polymer.

Characteristics				
1.1	Manufacturer (Abbreviation)		ULMA Inoxtruck	ULMA Inoxtruck
1.2	Manufacturer's model designation		AC EBT10S	EBT10S
1.3	Power source		1PH 230AC 50HZ	Battery
1.4	Operator type: pedestrian, operator standing, seated		Pedestrian	Pedestrian
1.5	Load capacity	Q	kg	1000
1.6	Load center distance	C	mm	600
1.8	Load wheel axle to fork face	X	mm	1035
1.9	Wheelbase	Y	m	1625
1.10	Chassis		AISI 304L	AISI 304L
1.11	Sheet		AISI 304L	AISI 304L
Weight				
2.1	Truck weight with nominal load		kg	1473
2.2	Axle loading nominal load, drive/load side		kg	519/954
2.3	Axle loading without load, drive/load side		kg	390/83
Weels and Drive Train				
3.1	Tyres: P=Polyurethane, PA=Polyamide (nylon), Vul=Vulkollan, drive/load side			PA/PA
3.2	Tyres dimensions, drive side			160 X 40
3.3	Tyres dimensions, load side			200 X 50
3.5	Number of wheels, drive/load side (x=driven)			2/2
3.6	Track width (center of tyres), drive side	b10	mm	905
3.7	Track width (center of tyres), load side	b11	mm	1230
Dimensions				
4.5	Overall height with tilted trolley (without container)	h4	mm	2885
4.9	Height of tiller arm (minimum/maximum)	h14	mm	1030
4.15	Fork height, fully lowered	h13	mm	165
4.19	Overall length	l1	mm	1895
4.20	Length to fork face (includes fork thickness)	l2	mm	695
4.21	Overall width	b1	mm	1350
4.25	Outside width over forks (minimum/maximum)	b5	mm	1070
4.32	Ground clearance at center of wheelbase	m2	mm	20
4.34a	Working aisle width (Ast) with 1000 x 1200 mm pallets, load lengthwise	Ast	mm	2530
4.42	Tilted trolley height	ht	mm	1300
4.43	Tilting angle		°	115
Performance				
5.2	Tilting time, with/without load	s		25-20/25-20
5.3	Lowering speed, with/without load	s		20-15/20-15
Electric Motor				
6.2	Lift motor output	AC	kW	1,1
6.4	Battery, voltage/capacity C20			12v / 85Ah
6.5	Battery weight			25,1

ULMA Inoxtruck's products are constantly improving. Because of this reason, some materials, options and specifications can be changed without previous notification

### OPTIONS:

- Stainless steel AISI 316L
- Gel battery 12V 85Ah
- Power source 1PH 110AC 60Hz (USA)



ULMA Servicios de Manutención S.Coop.

[www.ulmainoxtruck.com](http://www.ulmainoxtruck.com)

Paseo Otadui, nº 10  
20560 OÑATI (Gipuzkoa)

T.: (+34) 943 84 89 43  
info@ulmainoxtruck.com

**Engineered**  
by challenges